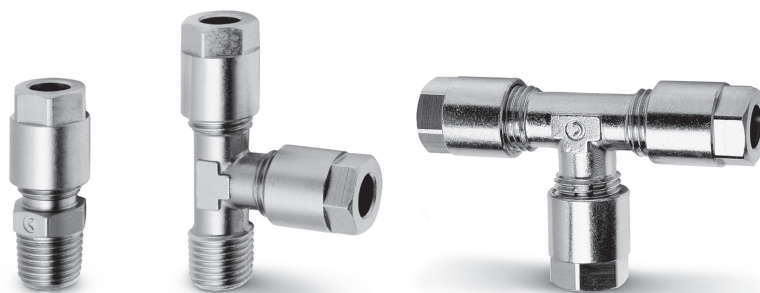


# Raccordi universali ad ogiva Serie 1000

Raccordi ad ogiva per tubi plastici, rame, ottone:  $\varnothing$  4, 6, 8, 10, 12 mm  
Filetti dei raccordi: cilindrici (G1/8, G1/4),  
conici (R1/8, R1/4, R3/8, R1/2)



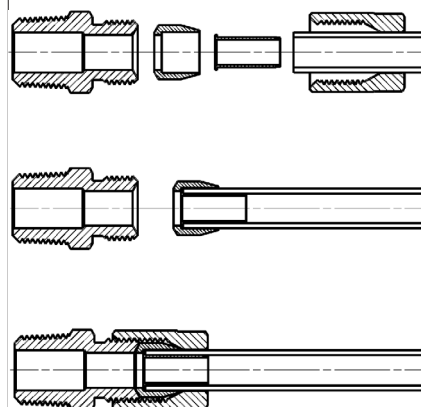
I raccordi universali ad ogiva Serie 1000 sono utilizzati con tubi in materiale plastico di ogni tipo e anche con tubi in rame, ottone, acciaio e alluminio. Idonei per diverse applicazioni, questi raccordi possono essere impiegati all'interno di circuiti pneumatici, oleodinamici e idraulici a bassa pressione.

Le sedi dei raccordi, le ogive e i dadi sono conformi alle norme DIN 3870-3861.

## CARATTERISTICHE GENERALI

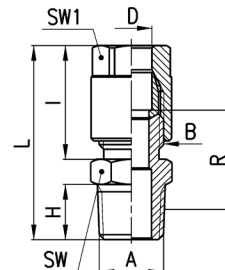
<b>Materiale</b>	OT nichelato
<b>Filettature</b>	GAS conico ISO 7 (BSPT) GAS cilindrico ISO 228 (BSP)
<b>Pressione</b>	max pressione 40 bar
<b>Tubo di collegamento</b>	rame ricotto e tubi plastici (con rinforzo)
<b>Diametri</b>	4 - 6 - 8 - 10 - 12 mm
<b>Fluido</b>	aria compressa e altri fluidi a bassa pressione
<b>Temperatura</b>	(vedere caratteristiche dei tubi impiegati)

## Raccordi con tubo di collegamento



**Raccordi Mod. 1050**

Diritto Maschio Conico

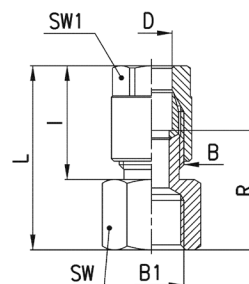

**DIMENSIONI**

Mod.	D	A	B	H	I	L	R	SW	SW1	Peso (g)
<b>1050 4-1/8</b>	4	R1/8	1/8	7,5	19	31	14	12	12	19
<b>1050 6-1/8</b>	6	R1/8	1/8	7,5	19	31	14	12	12	18
<b>1050 6-1/4</b>	6	R1/4	1/8	11	19	35	16,5	14	12	23
<b>1050 8-1/8</b>	8	R1/8	1/4	7,5	23	35	15,5	14	14	29
<b>1050 8-1/4</b>	8	R1/4	1/4	11	23	39	18	14	14	33
<b>1050 8-3/8</b>	8	R3/8	1/4	11,5	23	39,5	18	17	14	40
<b>1050 10-1/4</b>	10	R1/4	3/8	11	25,5	41,5	18	17	17	51
<b>1050 10-3/8</b>	10	R3/8	3/8	11,5	25,5	42	18	17	17	55
<b>1050 10-1/2</b>	10	R1/2	3/8	14	25,5	45	18	22	17	65
<b>1050 12-1/4</b>	12	R1/4	M18x1,5	11	24,5	40,5	12	19	19	56 *
<b>1050 12-3/8</b>	12	R3/8	M18x1,5	11,5	24,5	41	12	19	19	58 *
<b>1050 12-1/2</b>	12	R1/2	M18x1,5	14	24,5	44	12	22	19	68 *

\* = con ogiva biconica

**Raccordi Mod. 1063**

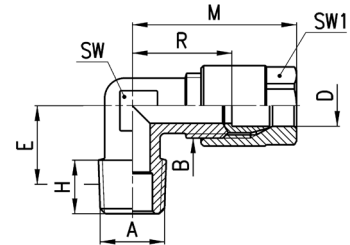
Diritto Femmina Cilindrico


**DIMENSIONI**

Mod.	D	B1	B	I	L	R	SW	SW1	Peso (g)
<b>1063 4-1/8</b>	4	G1/8	1/8	19	29	18,5	13	12	19
<b>1063 6-1/8</b>	6	G1/8	1/8	19	29	18,5	13	12	18
<b>1063 6-1/4</b>	6	G1/4	1/8	19	30,5	20	17	12	25
<b>1063 8-1/8</b>	8	G1/8	1/4	23	33	20	14	14	31
<b>1063 8-1/4</b>	8	G1/4	1/4	23	34,5	21,5	17	14	35

## Raccordi Mod. 1020

## Gomito Maschio Fisso Conico



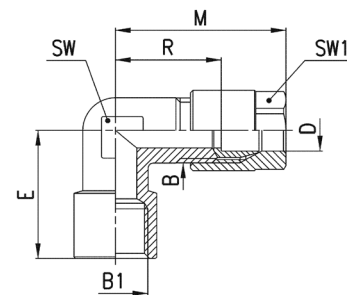
## DIMENSIONI

Mod.	D	A	B	E	H	M	R	SW	SW1	Peso (g)
<b>1020 4-1/8</b>	4	R1/8	1/8	11,5	7,5	29,5	19	9	12	21
<b>1020 6-1/8</b>	6	R1/8	1/8	11,5	7,5	29,5	19	9	12	19
<b>1020 6-1/4</b>	6	R1/4	1/8	13,5	11	29,5	19	12	12	27
<b>1020 8-1/8</b>	8	R1/8	1/4	11,5	7,5	33	20	11	14	35
<b>1020 8-1/4</b>	8	R1/4	1/4	13,5	11	33	20	12	14	36
<b>1020 8-3/8</b>	8	R3/8	1/4	15,5	11,5	35	22	14	14	50
<b>1020 10-1/4</b>	10	R1/4	3/8	15	11	38	22,5	13	17	59
<b>1020 10-3/8</b>	10	R3/8	3/8	15,5	11,5	38	22,5	14	17	58
<b>1020 10-1/2</b>	10	R1/2	3/8	16	14	38	22,5	16	17	78
<b>1020 12-1/4</b>	12	R1/4	M18x1,5	15	11	37	16,5	15	19	66 *
<b>1020 12-3/8</b>	12	R3/8	M18x1,5	15	11,5	37	16,5	15	19	66 *
<b>1020 12-1/2</b>	12	R1/2	M18x1,5	16	14	37	16,5	16	19	75 *

\* = con ogiva biconica

## Raccordi Mod. 1093

## Gomito Femmina Cilindrico

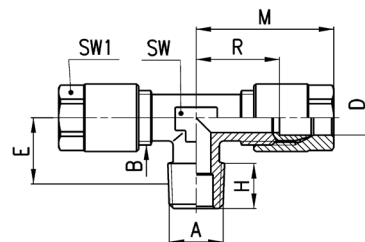


## DIMENSIONI

Mod.	D	B1	B	E	M	R	SW	SW1	Peso (g)
<b>1093 4-1/8</b>	4	G1/8	1/8	19	29,5	18,5	12	12	31
<b>1093 6-1/8</b>	6	G1/8	1/8	19	29,5	19	12	12	25
<b>1093 6-1/4</b>	6	G1/4	1/8	23	30,5	20	13	12	39
<b>1093 8-1/8</b>	8	G1/8	1/4	19	33	20	11	14	39
<b>1093 8-1/4</b>	8	G1/4	1/4	23	35	22	13	14	44

**Raccordi Mod. 1000**

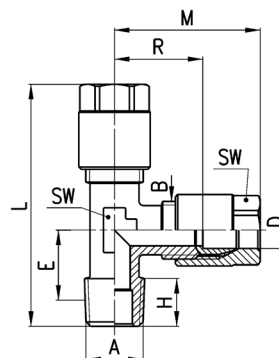
T Maschio Fisso Conico


**DIMENSIONI**

Mod.	D	A	B	E	H	M	R	SW	SW1	Peso (g)
<b>1000 4-1/8</b>	4	R1/8	1/8	11,5	7,5	29,5	19	9	12	35
<b>1000 6-1/8</b>	6	R1/8	1/8	11,5	7,5	29,5	19	9	12	33
<b>1000 8-1/4</b>	8	R1/4	1/4	13,5	11	33	20	12	14	63
<b>1000 10-1/4</b>	10	R1/4	3/8	15	11	38	22,5	13	17	104

**Raccordi Mod. 1010**

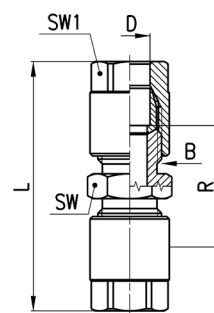
T Maschio Laterale Fisso Conico


**DIMENSIONI**

Mod.	D	A	B	E	H	L	M	R	SW	SW1	Peso (g)
<b>1010 4-1/8</b>	4	R1/8	1/8	11,5	7,5	48	29,5	19	9	12	37
<b>1010 6-1/8</b>	6	R1/8	1/8	11,5	7,5	48	29,5	19	9	12	33
<b>1010 8-1/4</b>	8	R1/4	1/4	13,5	11	54,5	33	20	12	14	61
<b>1010 10-1/4</b>	10	R1/4	3/8	15	11	61,5	38	22,5	13	17	103

**Raccordi Mod. 1230**

Diritto Intermedio

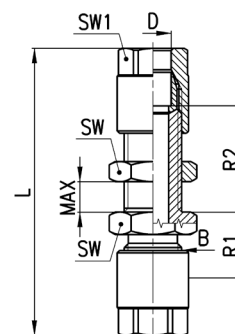

**DIMENSIONI**

Mod.	D	B	L	R	SW	SW1	Peso (g)
<b>1230 4</b>	4	1/8	42,5	21,5	12	12	29
<b>1230 6</b>	6	1/8	42,5	21,5	12	12	26
<b>1230 8</b>	8	1/4	51	25	14	14	48
<b>1230 10</b>	10	3/8	56	25	17	17	83
<b>1230 12</b>	12	M18x1,5	54	13	19	19	140

\* = con ogiva biconica

**Raccordi Mod. 1250**

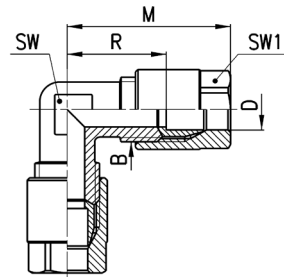
Diritto Passaparete


**DIMENSIONI**

Mod.	D	B	L	R1	R2	MAX	SW	SW1	Peso (g)
<b>1250 4</b>	4	1/8	57,5	12,5	23	12	14	12	40
<b>1250 6</b>	6	1/8	57,5	13	23,5	12	14	12	38
<b>1250 8</b>	8	1/4	65	15	24	13	17	14	67
<b>1250 10</b>	10	3/8	72,5	15	26,5	13	22	17	119

Raccordi Mod. 1220

Gomito Intermedio

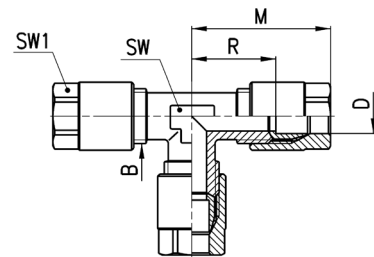


DIMENSIONI							
Mod.	D	B	M	R	SW	SW1	Peso (g)
<b>1220 4</b>	4	1/8	29,5	19	9	12	31
<b>1220 6</b>	6	1/8	29,5	19	9	12	29
<b>1220 8</b>	8	1/4	33	20	11	14	53
<b>1220 10</b>	10	3/8	38	22,5	14	17	92
<b>1220 12</b>	12	M18x1,5	37	16,5	16	19	99 *

\* = con ogiva biconica

Raccordi Mod. 1210

T Intermedio

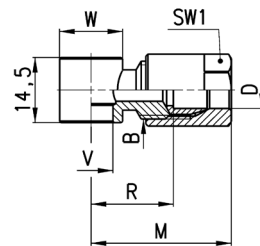


DIMENSIONI							
Mod.	D	B	M	R	SW	SW1	Peso (g)
<b>1210 4</b>	4	1/8	29,5	19	9	12	45
<b>1210 6</b>	6	1/8	29,5	19	9	12	42
<b>1210 8</b>	8	1/4	33	20	12	14	79
<b>1210 10</b>	10	3/8	38	22,5	13	17	133
<b>1210 12</b>	12	M18x1,5	37	16,5	16	19	144 *

\* = con ogiva biconica

Raccordi Mod. 1170

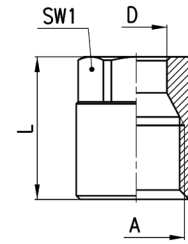
Anello Singolo



DIMENSIONI									
Mod.	D	B	R	M	V	W	SW1	Peso (g)	assemblabile con Mod.
<b>1170 6-1/8</b>	6	1/8	17.5	28	9.8	∅ 14	12	20	1631, 1635, SCU, SVU, SCO...
<b>1170 6-1/4</b>	6	1/8	20	30.5	13.2	∅ 18	12	24	1631, 1635, SCU, SVU, SCO...
<b>1170 8-1/8</b>	8	1/4	18	31	9.8	∅ 14	14	31	1635, SCU, SVU, SCO...

**Accessori Mod. 1303**

Dado di bloccaggio



DIMENSIONI					
Mod.	D	A	L	SW1	Peso (g)
<b>1303 4-1/8</b>	4	1/8	15,5	12	8
<b>1303 6-1/8</b>	6	1/8	15,5	12	8
<b>1303 8-1/4</b>	8	1/4	19	14	14
<b>1303 10-3/8</b>	10	3/8	21,5	17	24
<b>1303 12-M18x1,5</b>	12	M18x1,5	19,5	19	27

**Accessori Mod. 1310**

Ogiva e Bicono

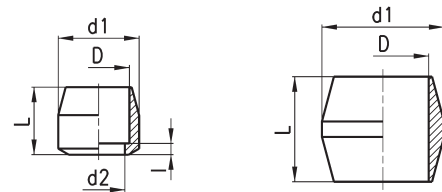


FIG. 1

FIG. 2

DIMENSIONI						
Mod.	D	d1	d2	l	L	Peso (g)
<b>1310 4</b>	4	7,8	3	1	8	2
<b>1310 6</b>	6	7,8	4,5	1	7	1
<b>1310 8</b>	8	10,8	7	1,5	9	3
<b>1310 10</b>	10	13,8	9	1,5	11,5	5
<b>1310 12-M18</b>	12	16,3	12	-	11	6 *

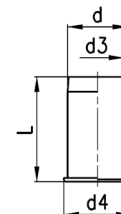
Fig. 1 = ogiva

Fig. 2 = ogiva bicono

\* = con ogiva bicono

**Accessori Mod. 1320**

Inserti



DIMENSIONI					
Mod.	d	d3	d4	L	Peso (g)
<b>1320 4</b>	4	3	5	12	1
<b>1320 6</b>	6	5	7	13	1
<b>1320 8</b>	8	7	9	14	1
<b>1320 10</b>	10	9	11	16	2